

1

2

3

4

5

6

A

A

B

B

C

C

D

D

E

E

F

F

G

G

H

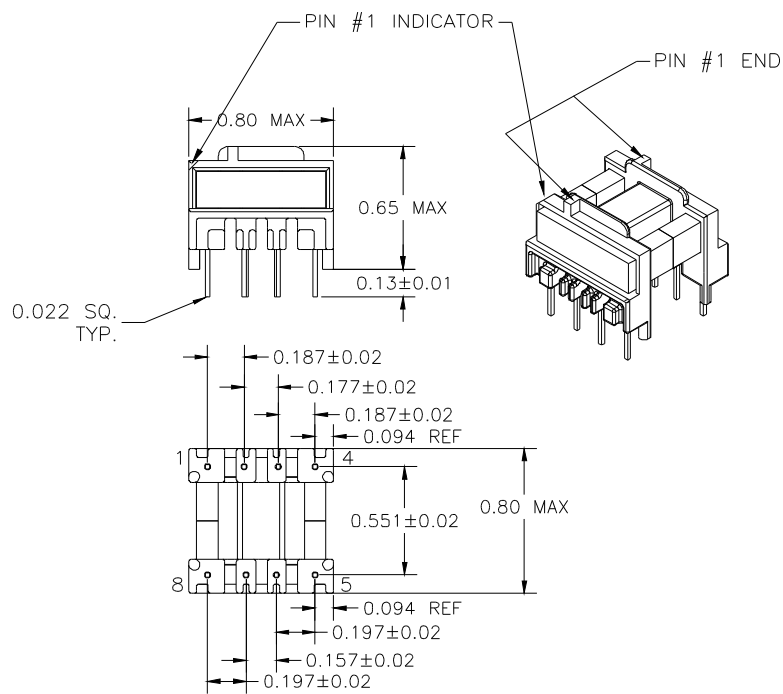
H

I

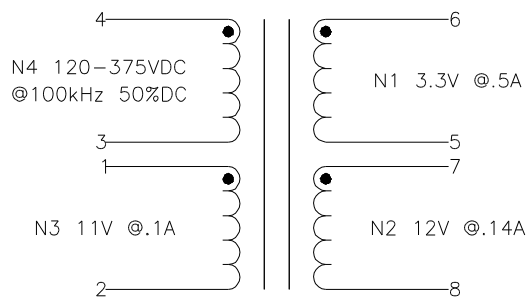
I

J

J



FOR USE WITH
STMicroelectronics
VIPer 20
SECONDARY REGULATION



NOTE:
POLARITY SHOWN IS THE TRANSFORMER.
FOR CORRECT FLYBACK OPERATION
CONNECT B+ TO PIN 3.

ELECTRICAL SPECIFICATIONS

L @ 1kHz .1V - (3-4) 2.8mH ±10

LL @ 100kHz .1V - (3-4) 38µH TYP, TOL TBD
(WITH 1,2,5-8 SHORTED)

URNS RATIO - ±3
3-4:1-2 - 1:0.096
3-4:5-6 - 1:0.03
3-4:8-7 - 1:0.108

DCR - OHMS TYP, TOL TBD
3-4 - 4.1
1-2 - 0.34
5-6 - 0.02
7-8 - 0.35

HIPOT - 5500VAC 1SEC
N1,N2 TO N3,N4

NOTE:
MEETS CONSTRUCTION FOR:
UL 1310, 1950, 1411
IEC 61558-1, 2-17, EN60950

REVISION		DATE	MARKINGS	LOCATION
0	PRELIMINARY	01/21/00	CRAMER EIA DATE CODE CVP 10-016	PIN RAIL SIDE OF CORE
1	CHANGED PIN OUTS	02/22/00	DESCRIPTION	TOLERANCE UNLESS OTHERWISE SPECIFIED 2 PLACE DECIMALS ±.010 3 PLACE DECIMALS ±.005 FRACTIONS ±1/64 ANGLES ±1/2°
			CUSTOMER	PROPRIETARY INFORMATION PROPERTY OF CRAMER COIL & TRANSFORMER CO. DUPLICATION AND/OR DISTRIBUTION BY PERMISSION ONLY
			CRAMER STANDARD	
			G:\DATA\SPCS\ENG\CVP\10-016	
			DR. CAM	DATE 01/21/00
			APPD. JDB	DATE 01/21/00
			CUSTOMER PART NUMBER REV	
			CRAMER PART NUMBER REV	
			CVP 10-016 1	

1

2

3

4

5

6