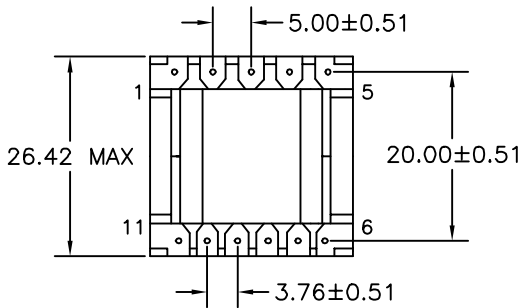
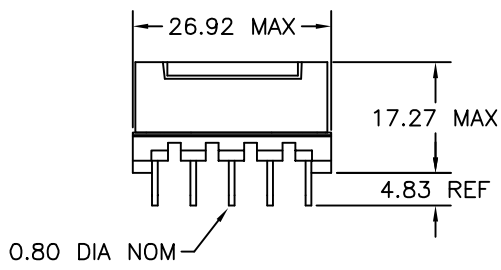


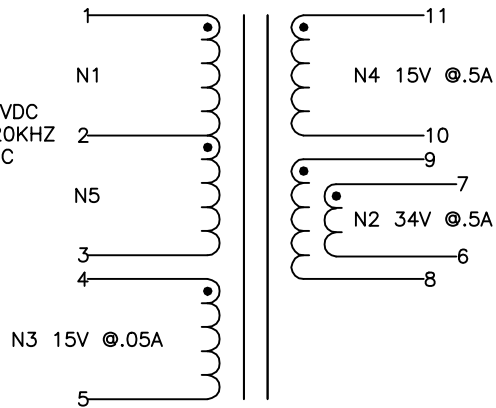
1 2 3 4 5 6

A  
B  
C  
D  
E  
F  
G  
H  
I  
J

A  
B  
C  
D  
E  
F  
G  
H  
I  
J



120-375VDC  
@ 100-120KHZ  
50% DC



NOTE:  
POLARITY SHOWN IS FOR THE  
TRANSFORMER. FOR CORRECT  
FLYBACK OPERATION, CONNECT  
B+ TO PIN 3.

ELECTRICAL SPECIFICATIONS

L @ 1kHz 10mA - (1-3) 342μH ±10%

LL @ 100kHz 10mA - (1-3) 8.32μH TYP, TOL TBD  
(WITH 4-11 SHORTED)

URNS RATIO - ±3%  
1-3:7-6 - 1:0.304  
1-3:9-8 - 1:0.304  
1-3:4-5 - 1:0.130  
1-3:11-10 - 1:0.130

DCR - OHMS TYP, TOL TBD  
1-3 - 0.440  
7-6 - 0.133  
9-8 - 0.133  
4-5 - 0.065  
11-10 - 0.071

HIPOT - 4000VAC 1SEC  
N1,N3,N5 TO N2,N4

REVISION		DATE	MARKINGS	LOCATION			
			CRAMER DATE CODE	PIN RAIL SIDE OF CORE			
O	PRELIMINARY	11/03/05	CVP 53-024				
A	RELEASED	12/08/05	DESCRIPTION 43 VA VIPER53 FLYBACK XFMR	TOLERANCE UNLESS OTHERWISE SPECIFIED 2 PLACE DECIMALS ±.010 3 PLACE DECIMALS ±.005 FRACTIONS ±1/64 ANGLES ±1/2°  PROPRIETARY INFORMATION PROPERTY OF CRAMER COIL & TRANSFORMER CO. DUPLICATION AND/OR DISTRIBUTION BY PERMISSION ONLY			
B	N3&N4 NOW BI-FILAR	01/24/06	CUSTOMER				
C	28GA TEFZEL WAS .32MM TEX-E	07/07/06					
D	UPDATED LL & DCR'S	08/22/06					
E	TWO NEW VERSIONS	09/20/06	G:\DATA\SPECS\ENG\CVP\53-024		CUSTOMER PART NUMBER	REV	
F	ONE OF THE VERSIONS CHOSEN	10/02/06	DR. MEC		DATE 11/03/05	CRAMER PART NUMBER CVP 53-024	REV F
			APPD. MJA		DATE 12/08/05		

1 2 3 4 5 6